

General Tab

USB Touch Monitor Calibration

1. Run USB Monitor calibration software Touchside or eGalaxTouch.
(The software layout is similar for both applications)
2. Highlight the USB Controller icon you would like to run calibration with as shown in Figure 2.

Once highlighted, click 'Apply' and go to 'Display' tab.

(Each USB Controller icon represents a USB Monitor currently connected to the computer.)

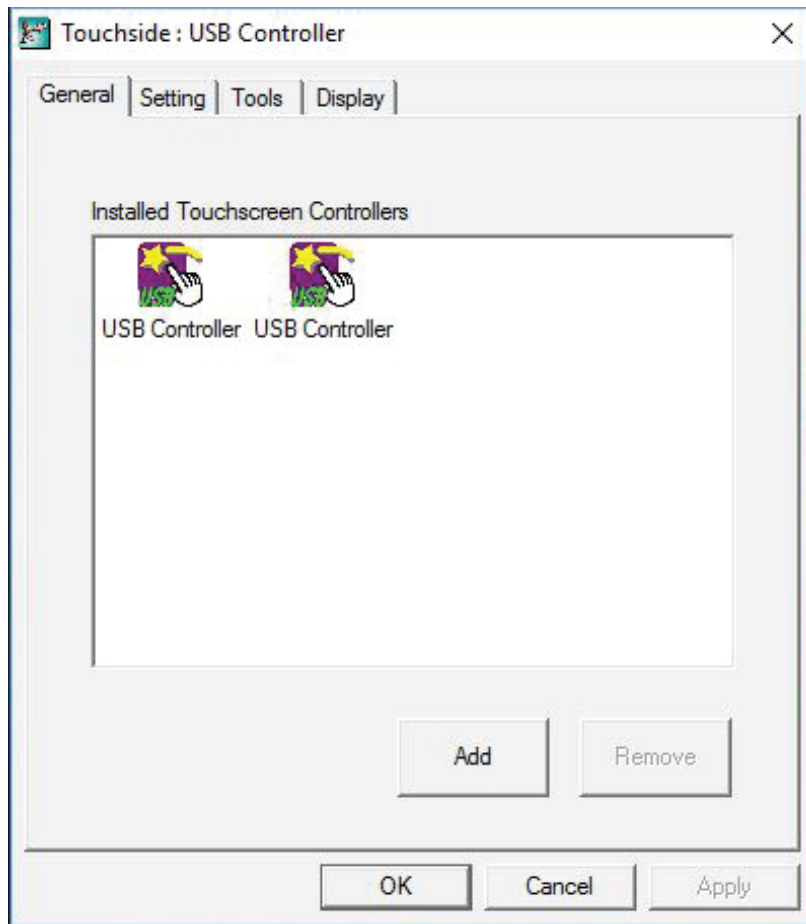


Figure 1

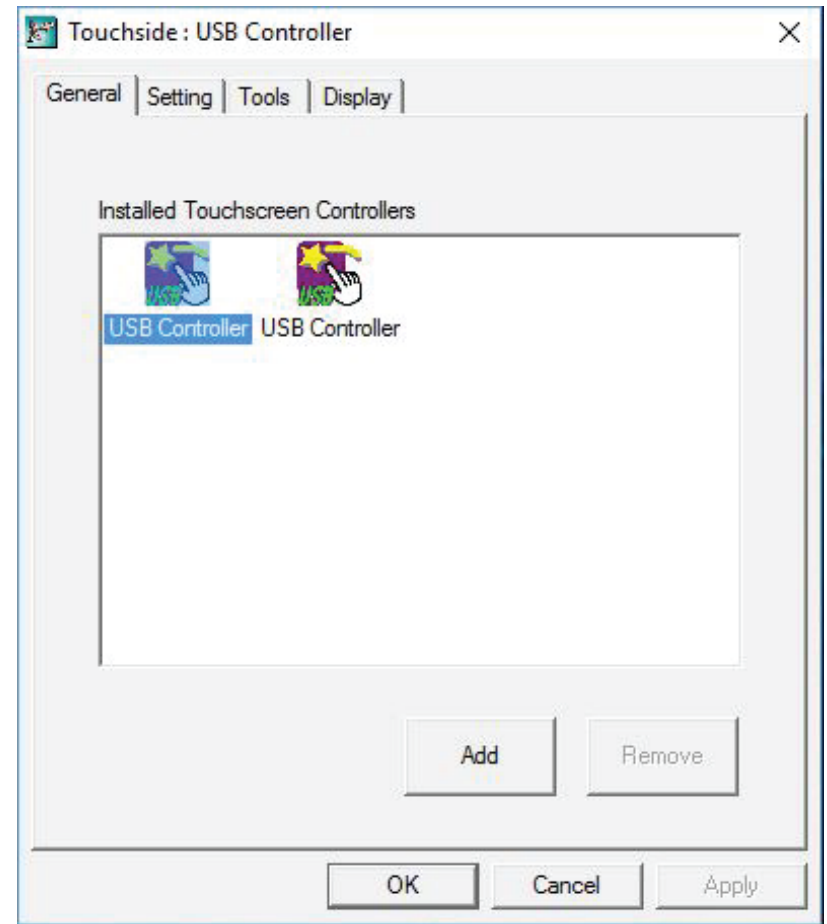


Figure 2

Display Tab

1. Double Click the box icon with the number which represents your USB Monitor and click 'Yes' to confirm as shown in Figure 4. Once confirmed, box representing the USB Monitor should be highlighted as shown in Figure 5.
2. Check the box 'Enable Multiple Monitors'.
3. Click 'Apply' at the bottom and go to 'Tools' tab.

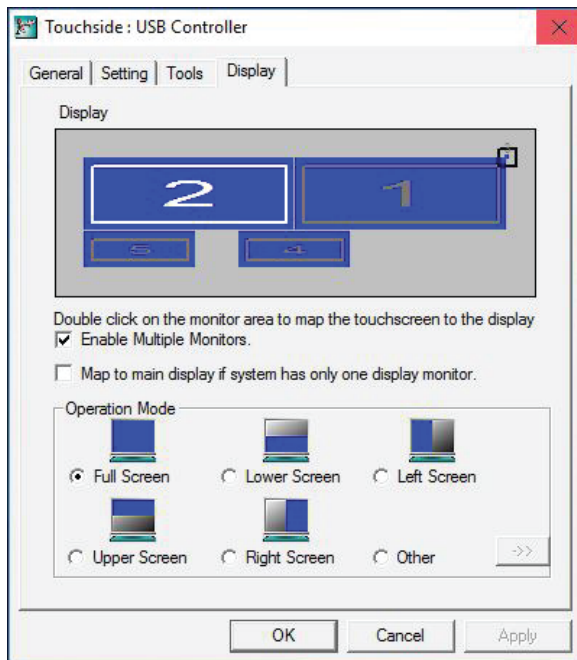


Figure 3

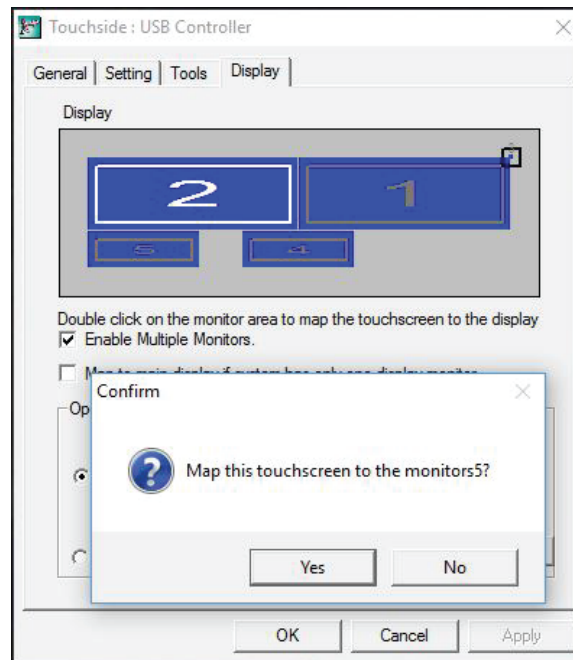


Figure 4

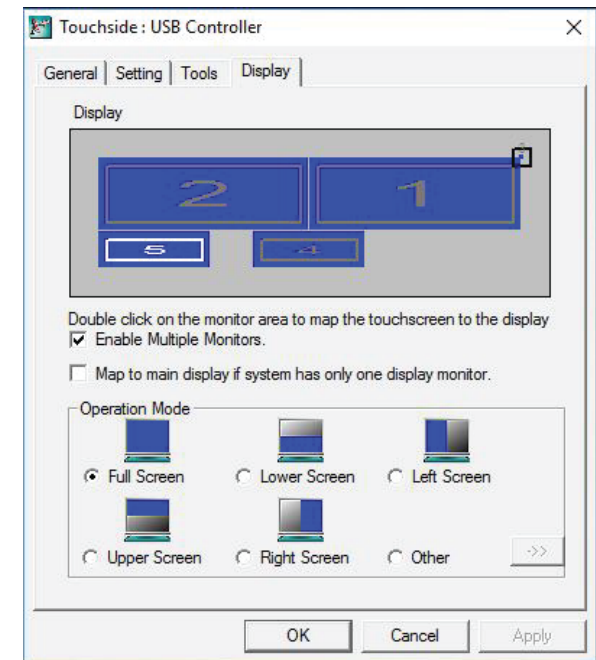


Figure 5

Tools Tab

1. Click '4 Points Calibration' and the display as shown in Figure 7 should appear on your USB Monitor.
(if Figure 7 appears on the wrong monitor display, you need to correctly align the 'USB Controller' from General Tab with Monitor icon representing your USB Monitor shown in Display Tab)
2. Touch and hold your finger on the blinking red cross shown on each corners of the monitor until it stops blinking and move onto other corners until finished.
3. Calibration is done.
 - You may also try 'Draw Test' to test drawing on the monitor with your finger.
(you may notice some gaps between the lines as you draw but this is normal and occurs only during the Draw Test)
 - 'Linearization' is a 9 Points Calibration which allows you to calibrate the monitor even more accurately.

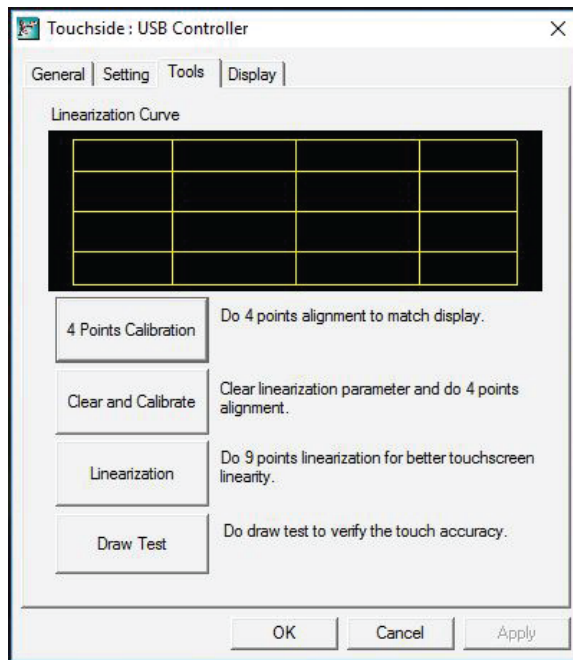


Figure 6



Figure 7